

Miniature Pulse Valves

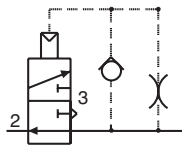
A Normally-Open 3/2 valve that closes shortly after being pressurized and remains closed until supply pressure is exhausted and repressurized. Widely used in control circuits.

Medium:
Air

Input Pressure:
2.7 to 10 bar max.

Mounting:
R1/8 thread; nut furnished

Volume Chamber:
M5


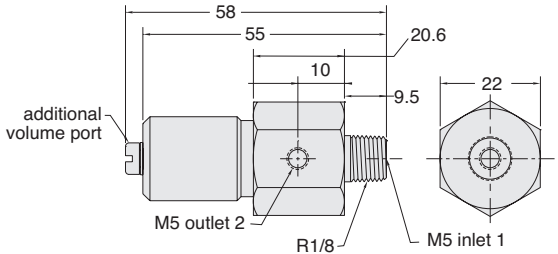


Operation:
Converts a continuous supply of inlet air into a pulse of approximately 100 milliseconds


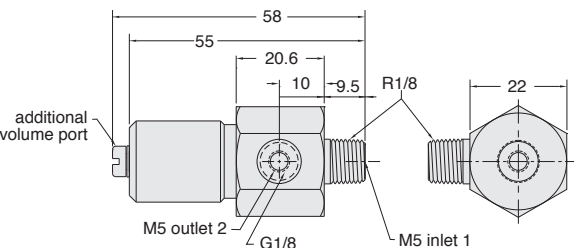
Response:
300 cycles per minute; time delay may be increased by adding standard Clippard volume chambers not to exceed 50 cm³

Construction:
Body - ENP brass, Seals - Nitrile rubber, Spring - stainless steel, Poppet - Delrin®

M5 Ports

1/8 Ports

Part No.	Description
M-PV-1	Pulse Valve, M5
M-PV-1P	Pulse Valve G1/8